

## Other Durum varieties

released by the North Dakota  
Agricultural Experiment Station:

**Alkabo** – (2005) High yield potential, especially in northwestern North Dakota. Large kernel size, good quality and very strong straw.

**Grenora** – (2005) Very high yield potential with great yield stability and good quality.

**Pierce** – (2001) Excellent balance of quality and yield.

**Lebsock** – (1999) Very high test weight with great yield potential and good quality.

**Mountrail** – (1998) Average quality rating with great yield. Slightly later maturity.

## For information on the availability of Foundation seed contact:

### NDSU Research/Extension Centers

Agronomy Seed Farm, Casselton.....347-4743  
Carrington Research Extension Center.....652-2951  
Hettinger Research Extension Center .....567-4323  
Langdon Research Extension Center.....256-2582  
North Central Research Ext. Center.....857-7679  
Williston Research Extension Center .....774-4315

Or

NDSU Foundation Seedstocks Project  
P.O. Box 5051  
Fargo, ND 58105-5051

701-231-8140

[www.ag.ndsu.nodak.edu/aginfo/seedstock/fss/](http://www.ag.ndsu.nodak.edu/aginfo/seedstock/fss/)

## Plant Quality Certified Seed

Certified seed is field inspected and lab analyzed to help ensure variety identity, germination, and purity. Contact your local seed producer or dealer for quality certified seed.

Seed producers or dealers can be found in the North Dakota Field Inspected Seeds Directory. The directory is available from the North Dakota State Seed Department (NDSSD), North Dakota Crop Improvement & Seed Association, your local county agent, or under the field seeds program of the NDSSD website. [www.ndseed.com](http://www.ndseed.com)

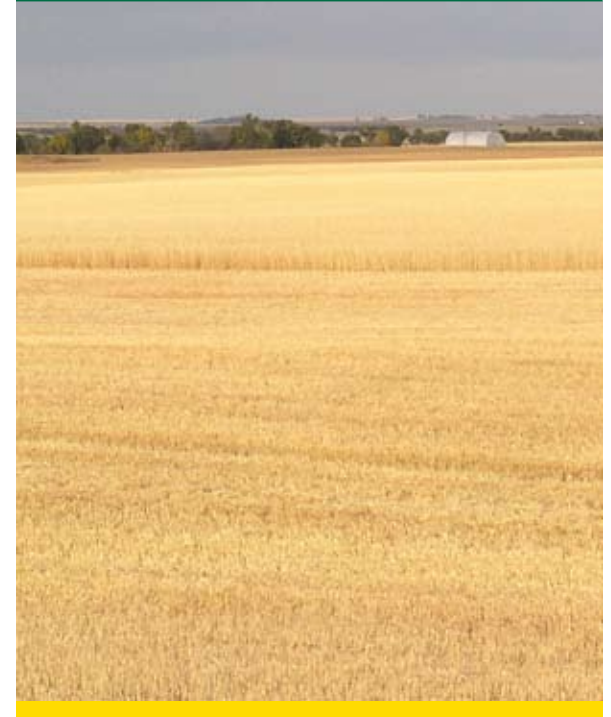


Varieties protected under PVP with Title V option can only be sold as a certified class of seed. **It is the responsibility of the buyer and/or seller to confirm the PVP status of a specific crop variety prior to buying or selling the variety.** PVP status information can be obtained from the ND State Seed Department.

# NDSU<sup>®</sup>

## AGRICULTURE

# Divide Durum



[www.ndcropimprovement.org](http://www.ndcropimprovement.org)

# Divide Durum

**Divide** was developed by the NDSU Durum Breeding Program and released by the North Dakota Agricultural Experiment Station in 2005. The direct parentage of Divide includes Ben and Belzer. Divide has shown excellent yield potential in NDSU yield trials and has exhibited slightly better tolerance to FHB (scab) than other durum varieties.

Divide durum is named for Divide county which is a consistent leader in North Dakota durum production. Although Divide county is the Northwestern-most county in North Dakota this does not mean that the adaptation of Divide is limited to the west. In fact, Divide performs well across the durum producing region and provides a slight advantage in the east due to its disease resistance package.

Divide is rated as moderately resistant (MR) to scab and does provide slightly enhanced protection against scab relative to other durum varieties. However, the level of scab tolerance of Divide is not equal to that of certain hard red spring wheat varieties, but is more similar to that exhibited by the durum variety Belzer.

Divide has been given an overall quality rating of 'Excellent' by the NDSU Cereal Chemists. The overall quality rating is based on agronomic, milling, and spaghetti processing performance.

To help ensure genetic purity, 'Divide' Durum will be protected under PVPA Title V and must be sold as a class of certified seed.

For more information about Divide and other durum varieties visit [www.ag.ndsu.nodak.edu/aginfo/variety/index.htm](http://www.ag.ndsu.nodak.edu/aginfo/variety/index.htm) or contact the NDSU durum breeder or small grains agronomist at 701-231-7979.



## Divide General Characteristics

- Great yield
- Excellent overall quality
- Moderate protection against scab
- Strong straw
- White chaff
- Medium height
- Medium maturity

**Grain yield of Divide and other durum varieties grown in NDSU variety trials at several sites in North Dakota, 2002-2005.**

Variety	Carrington	Langdon	Minot <sup>1</sup>	Dickinson	Hettinger	Williston
<b>Divide</b>	<b>64.5</b>	<b>78.0</b>	<b>83.3</b>	<b>45.9</b>	<b>39.2</b>	<b>49.3</b>
Alkabo	58.4	78.3	71.6	46.3	39.2	49.3
Grenora	62.4	79.0	84.4	47.2	42.3	48.3
Pierce	59.2	73.3	84.5	46.2	37.7	45.7
Mountrail	61.2	76.4	75.8	45.6	42.1	46.5
Lebsock	61.1	74.5	73.4	44.4	40.8	47.4
Ben	58.6	71.4	74.9	44.0	40.1	45.4

<sup>1</sup>Minot data includes 2005 only.

**Agronomic traits of Divide and other durum varieties in the NDSU variety trials, 2002-2005.**

Variety	Grain Yield <sup>1</sup> (bu/ac)	Test Weight <sup>2</sup> (lb/bu)	Protein <sup>2</sup> (%)	Height <sup>3</sup>	Maturity <sup>3</sup>	Straw Strength <sup>3</sup>	FHB <sup>3,4</sup>	Stem Rust <sup>3,4</sup>	Leaf Rust <sup>3,4</sup>	Foliar Disease <sup>3,4</sup>
<b>Divide</b>	<b>60.0</b>	<b>58.1</b>	<b>16.0</b>	<b>Medium</b>	<b>Medium</b>	<b>Strong</b>	<b>MR</b>	<b>R</b>	<b>R</b>	<b>M</b>
Alkabo	57.2	58.6	15.5	Medium	Medium	Very Strong	MS	R	R	M
Grenora	60.6	57.3	15.7	Medium	Medium	Strong	MS	R	R	M
Pierce	57.8	58.4	16.0	Medium	Medium	Medium Strong	MS	R	R	MS
Mountrail	57.9	57.0	16.0	Medium	Late	Strong	MS	R	R	M
Lebsock	56.9	59.1	15.6	Medium	Medium	Strong	MS	R	R	M
Ben	55.7	58.1	16.2	Medium	Medium	Strong	MS	R	R	MR

<sup>1</sup>Carrington, Langdon, Dickinson, Hettinger and Williston, 2002-2005; Minot, 2005.

<sup>2</sup>Carrington, Minot, Williston, Dickinson and Hettinger, 2005.

<sup>3</sup>2005 variety descriptions provided by NDSU scientists based on several years of testing.

<sup>4</sup>R = Resistant, MR = Moderately resistant (slow rusters), M = intermediate, MS = Moderately susceptible, S = Susceptible, VS = Very susceptible; Foliar Disease = reaction to tan spot and septoria leaf spot complex.